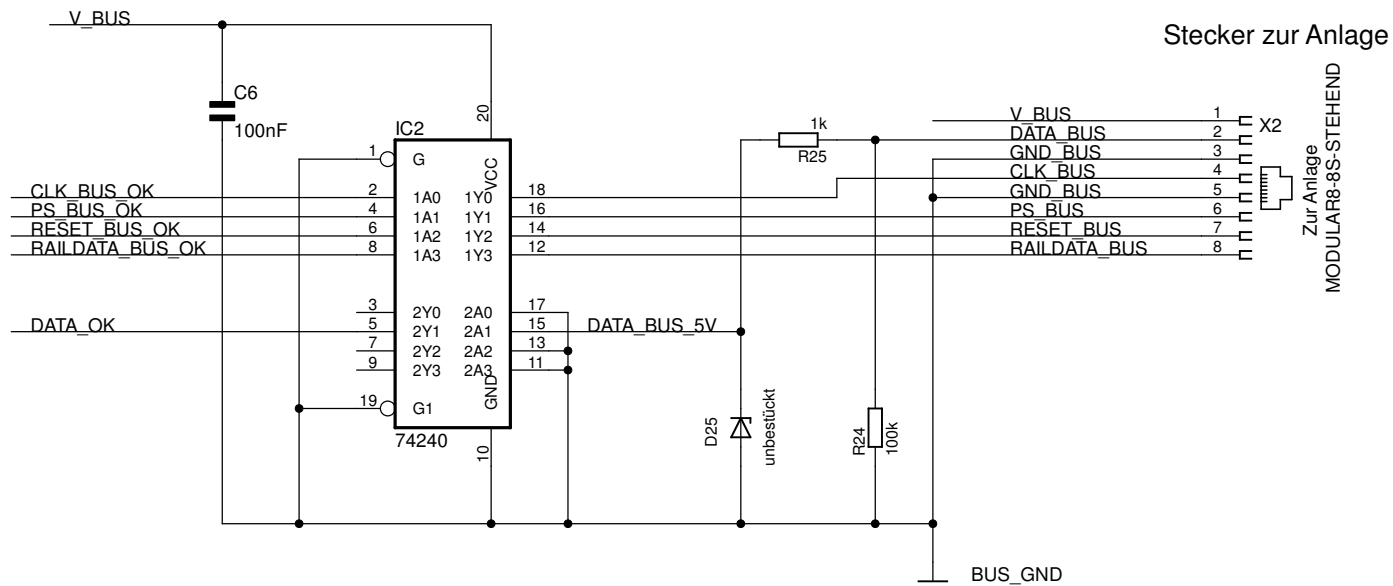


Bus Anlage

Power-Modul (für S88-N-Bus) - DC/DC Wandler	
(c) www.digital-bahn.de - Sven Brandt	
TITLE: s88-n-p	
Document Number:	REV: V2.31
Date: 18.03.2012 17:48:56	Sheet: 1/5



D25 nur mit BZV 5.1 bestücken, wenn
Busspannung 12V ist !

Bus Anlage

Power-Modul (für S88-N-Bus)
(c) www.digital-bahn.de - Sven Brandt

TITLE: s88-n-p

Document Number:

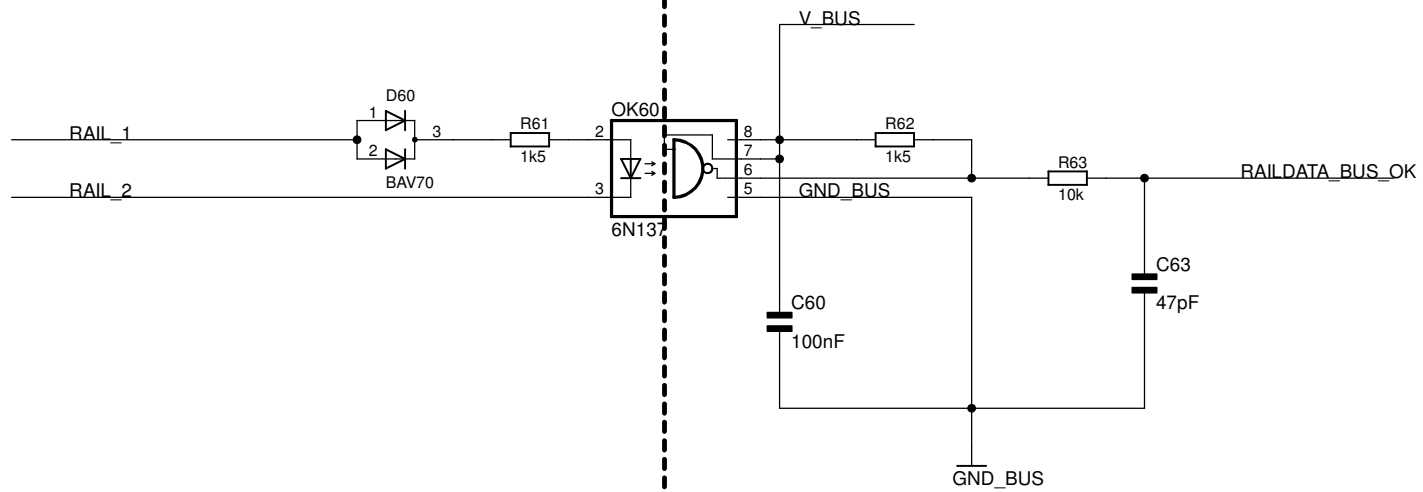
REV:
V2.31

Date: 18.03.2012 17:48:56

Sheet: 2/5



Einkopplung RAILDATA



Gleisspg. Bus Anlage

Bus Anlage

Power-Modul (für S88-N-Bus) - RAILDATA
(c) www.digital-bahn.de - Sven Brandt

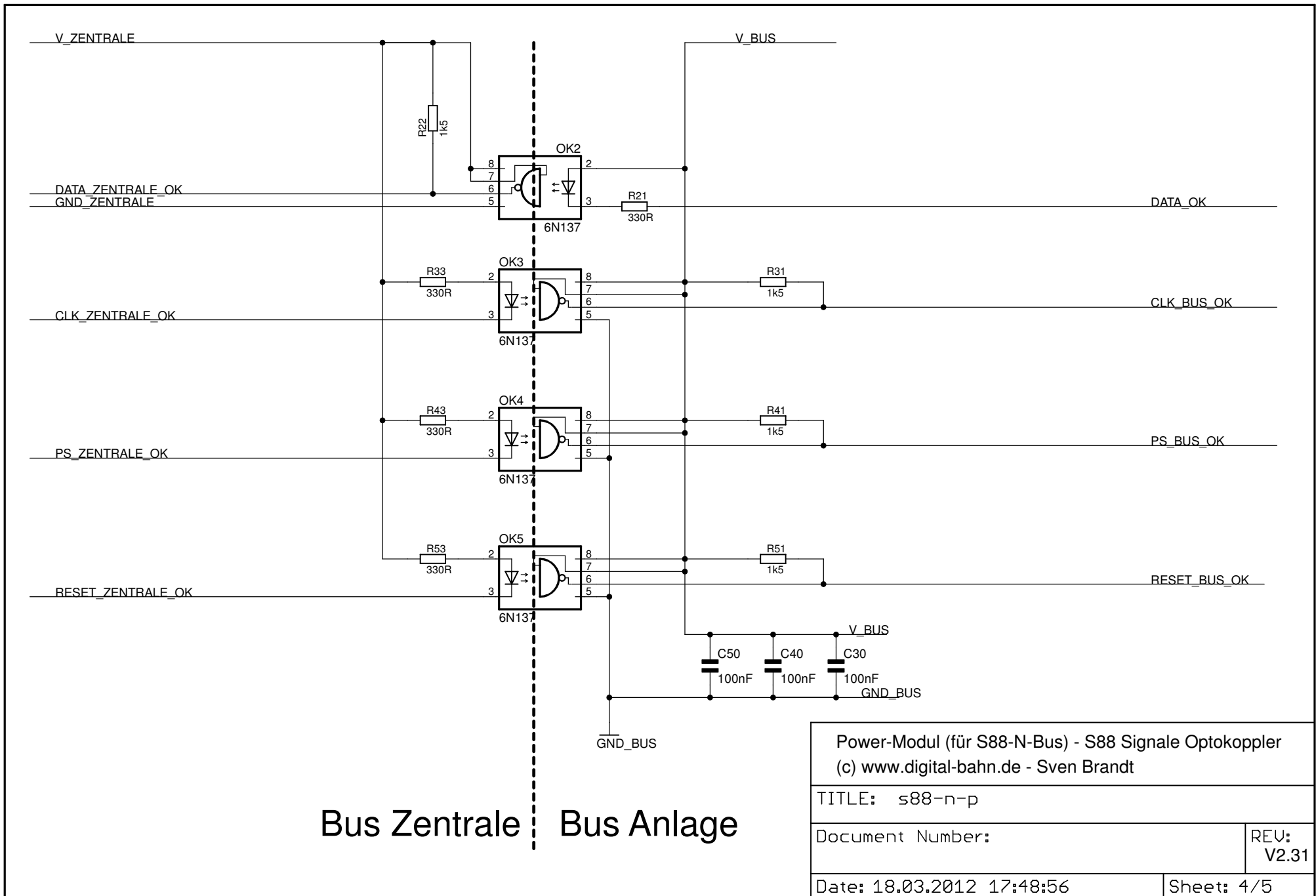
TITLE: s88-n-p

Document Number:

REV:
V2.31

Date: 18.03.2012 17:48:56

Sheet: 3/5

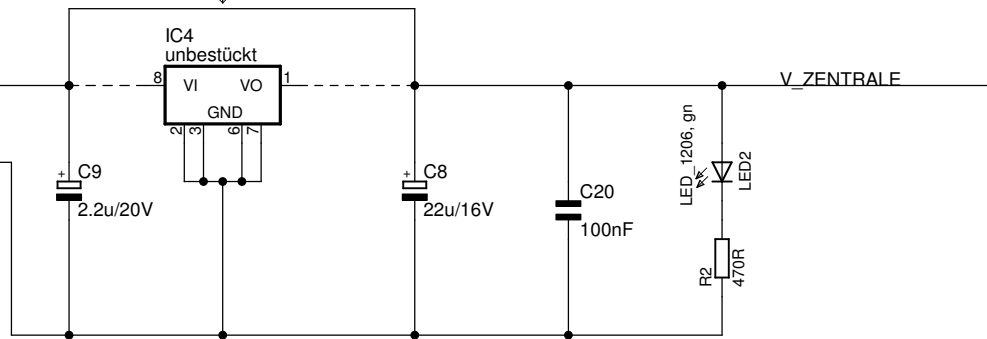
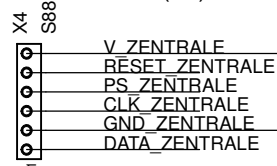


Bus Zentrale | Bus Anlage

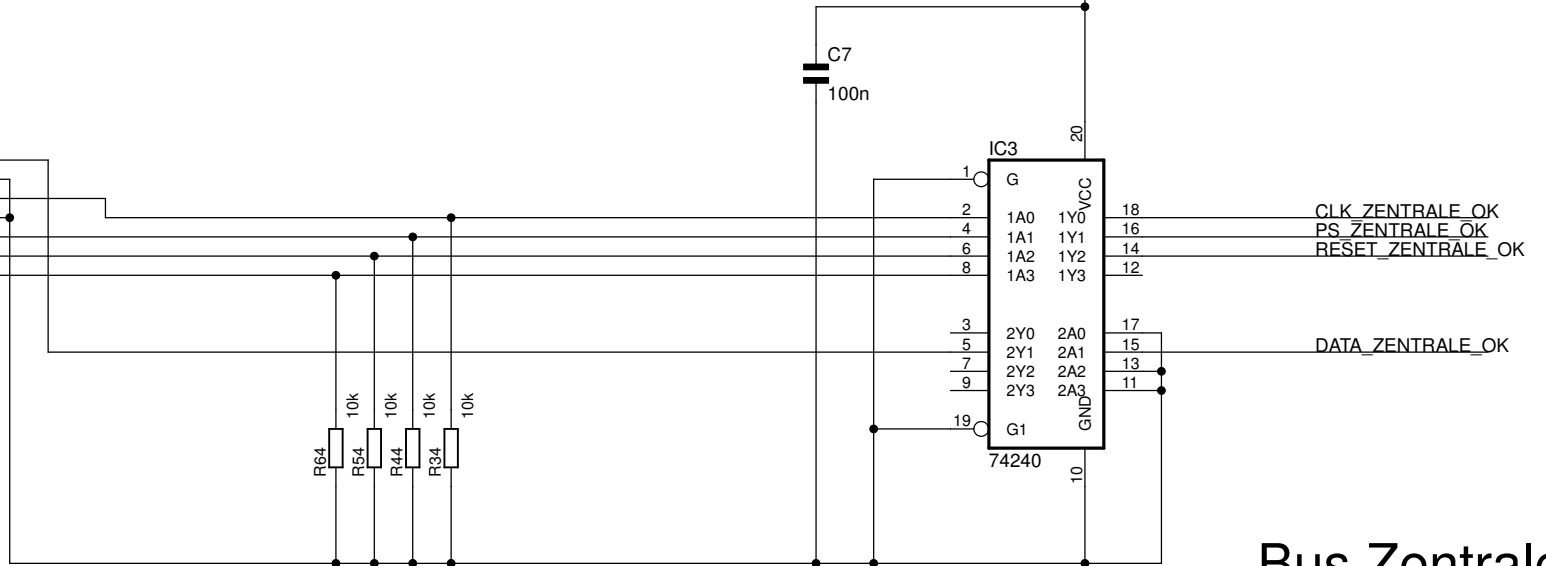
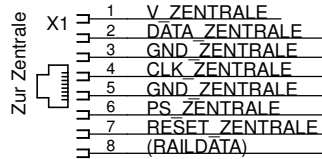
Power-Modul (für S88-N-Bus) - S88 Signale Optokoppler (c) www.digital-bahn.de - Sven Brandt	
TITLE: s88-n-p	
Document Number:	REV: V2.31
Date: 18.03.2012 17:48:56	Sheet: 4/5

IC4 nur mit LM2931 bestücken, wenn Busspannung > 5V ist
(z.B. beim "alten" S88-Projekt)
(in dem Fall: hier trennen!)

Stecker zur Zentrale (alt)



Stecker zur Zentrale



Bus Zentrale

Power-Modul (für S88-N-Bus) - RAILDATA
(c) www.digital-bahn.de - Sven Brandt

TITLE: s88-n-p

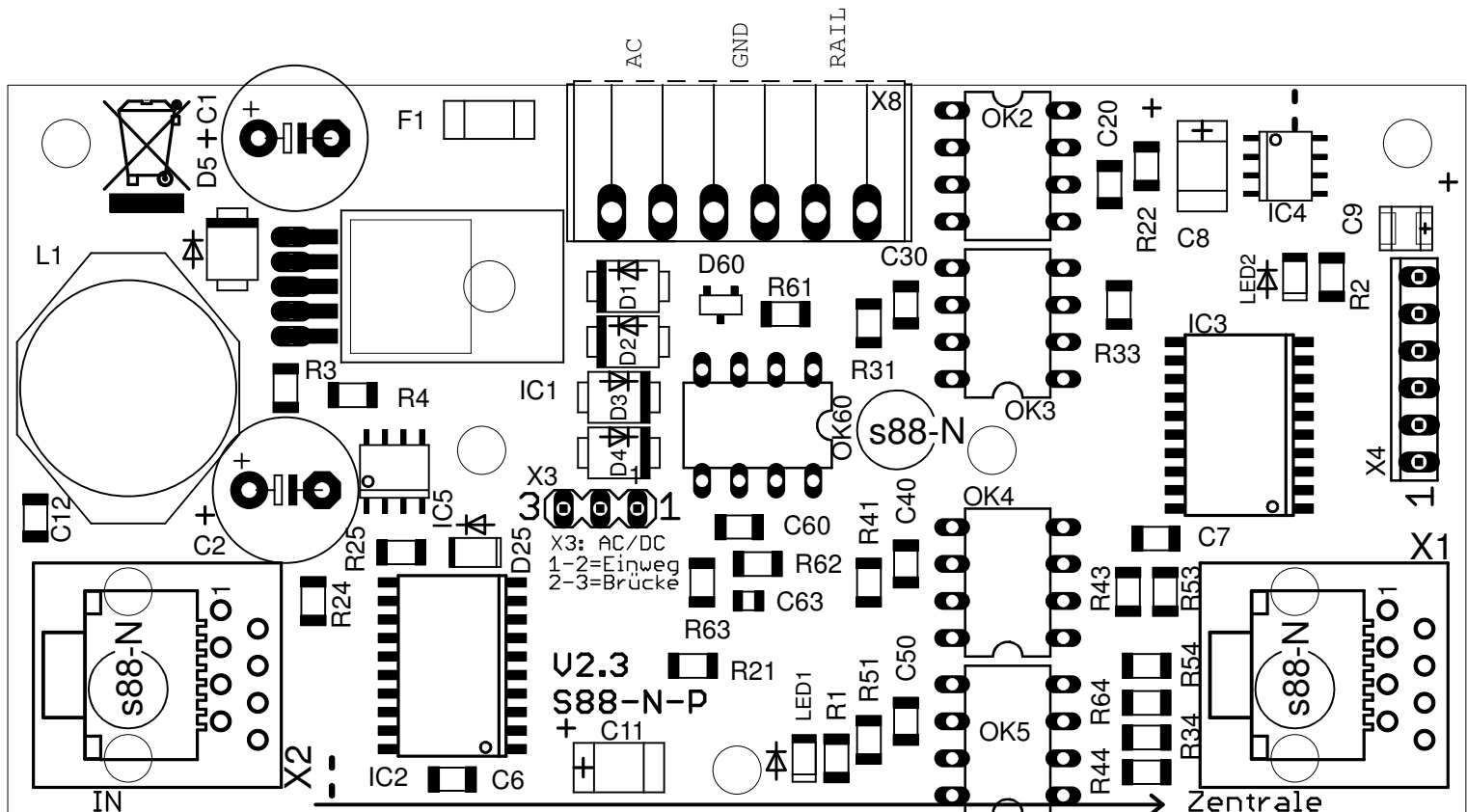
Document Number:

REV:
V2.31

Date: 18.03.2012 17:48:56

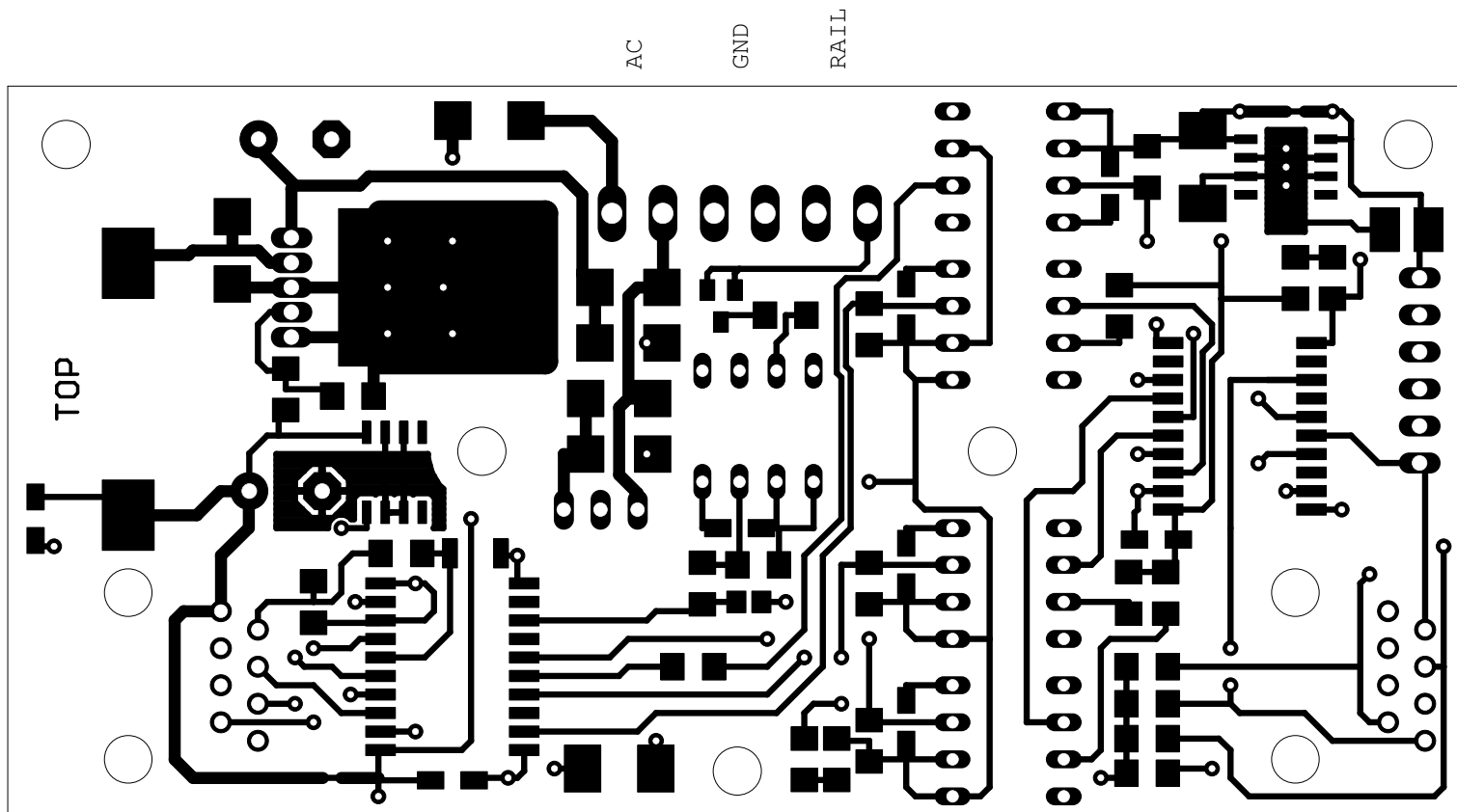
Sheet: 5/5

Achtung!
Hier NICHT
die Zentrale
anschliessen



100 mm x 50 mm

(c) www.digital-bahn.de - Sven Brandt

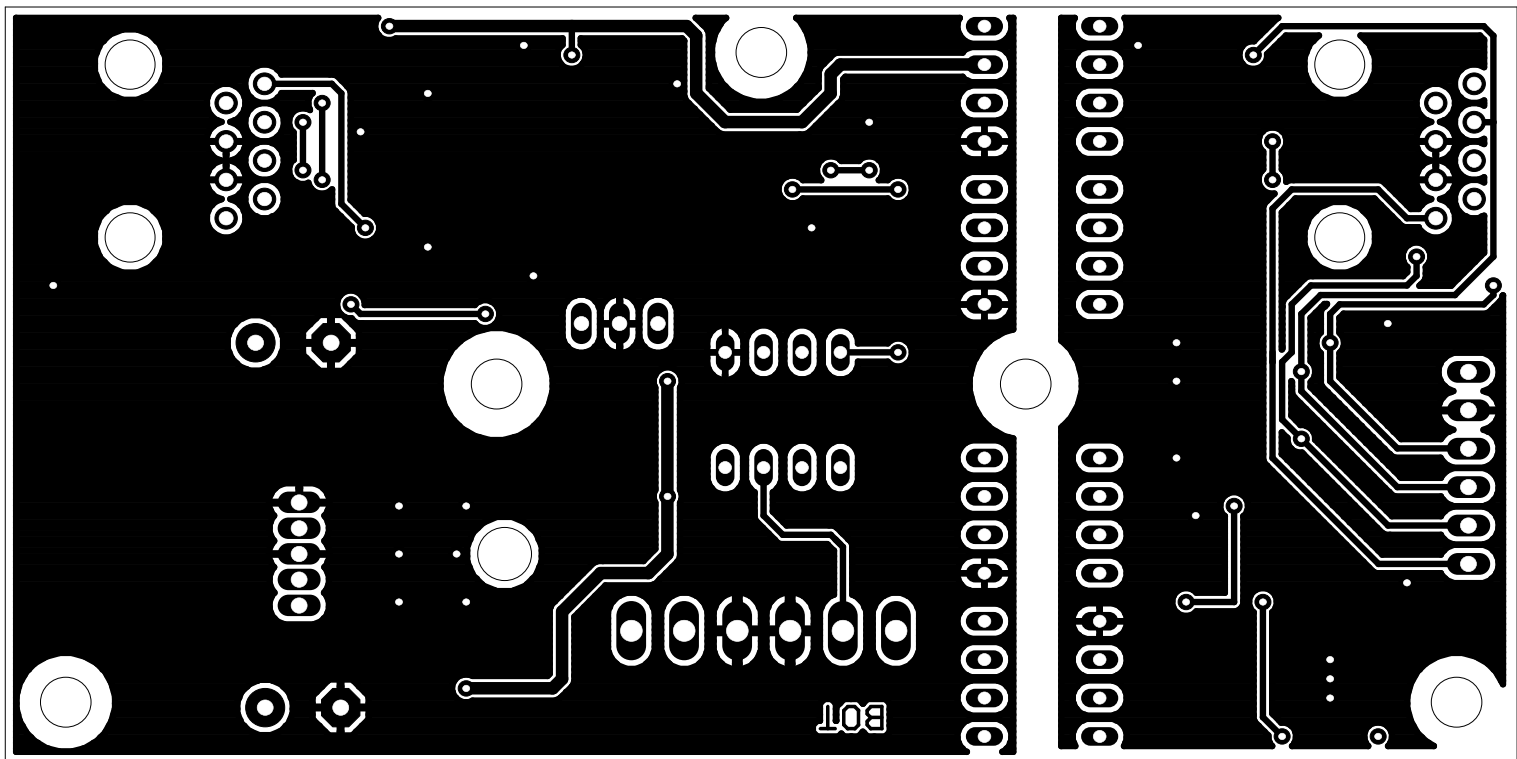


100 mm x 50 mm

(c) www.digital-bahn.de - Sven Brandt

100 mm x 20 mm

(c) www.qtdtfgj-pajm.de - ZVEN Brande



AVTT
GND
VCC