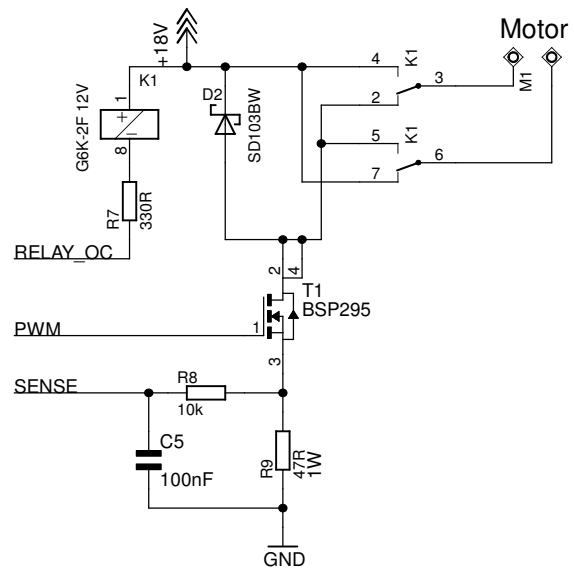


Ansteuerung fuer Drehscheibe, Bühnen-Platine
(c) www.digital-bahn.de - Sven Brandt

TITLE: dsd_buehne

Document Number: REV: 1.30

Date: 23.02.2011 11:20:18 Sheet: 1/3



Ansteuerung fuer Drehscheibe, Bühnen-Platine
(c) www.digital-bahn.de - Sven Brandt

TITLE: dsd_buehne

Document Number:

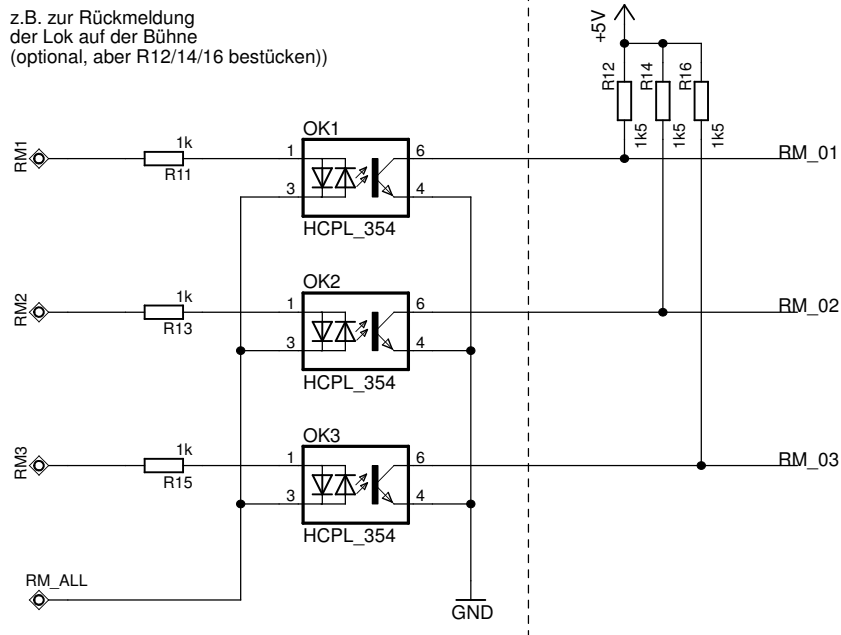
REU:
1.30

Date: 23.02.2011 11:20:18

Sheet: 2/3

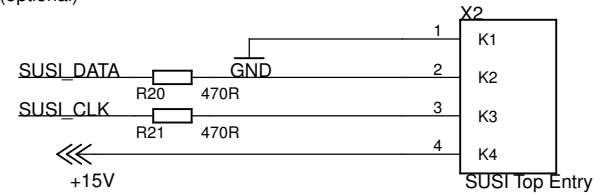
3x Optokoppler-Eingänge

z.B. zur Rückmeldung der Lok auf der Bühne (optional, aber R12/14/16 bestücken)



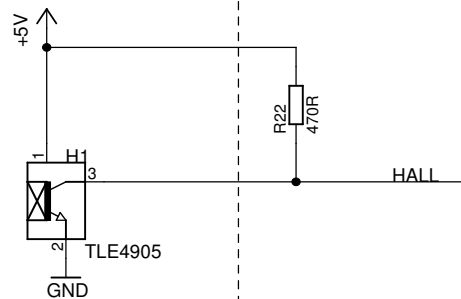
SUSI Schnittstelle

nur Anbindung eines SUSI Sound Moduls (optional)



Hall Sensor

zur Erfassung der Null-Position (optional, aber R22 bestücken)



Ansteuerung fuer Drehscheibe, Bühnen-Platine
(c) www.digital-bahn.de - Sven Brandt

TITLE: dsd_buehne

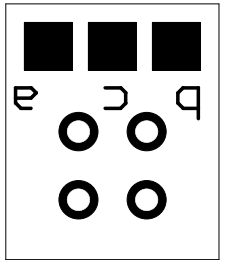
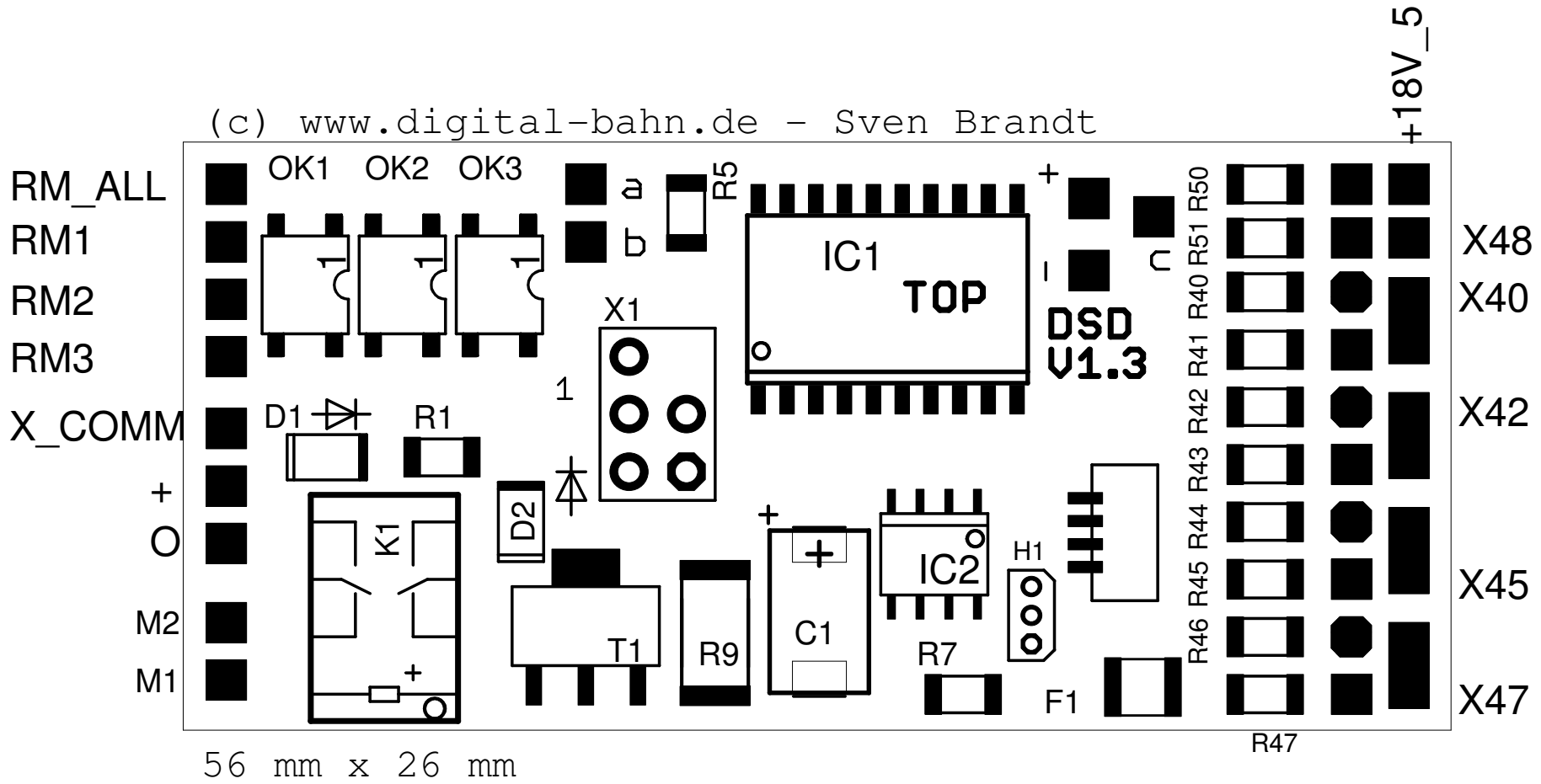
Document Number:

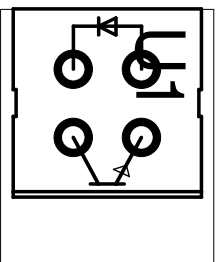
REV:
1.30

Date: 23.02.2011 11:20:18

Sheet: 3/3

(c) www.digital-bahn.de - Sven Brandt

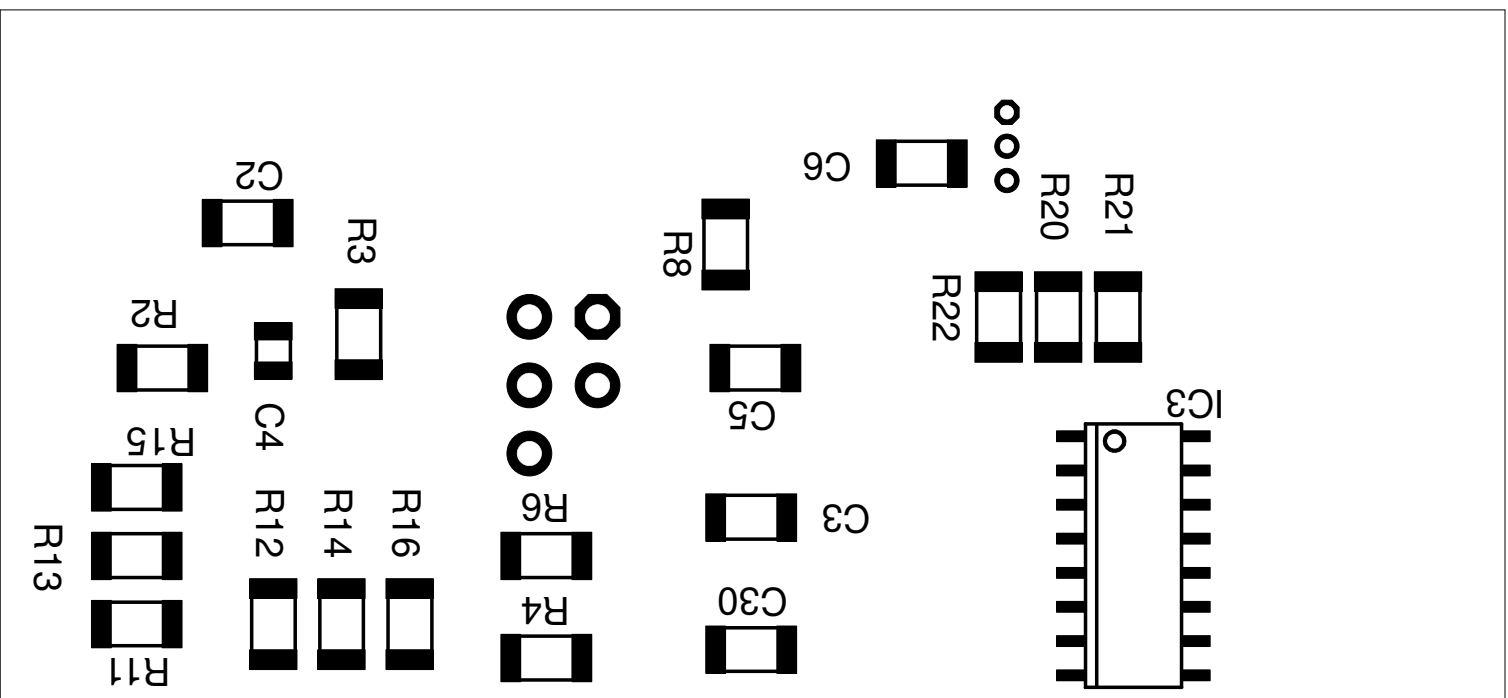




S-LED+

S-GND

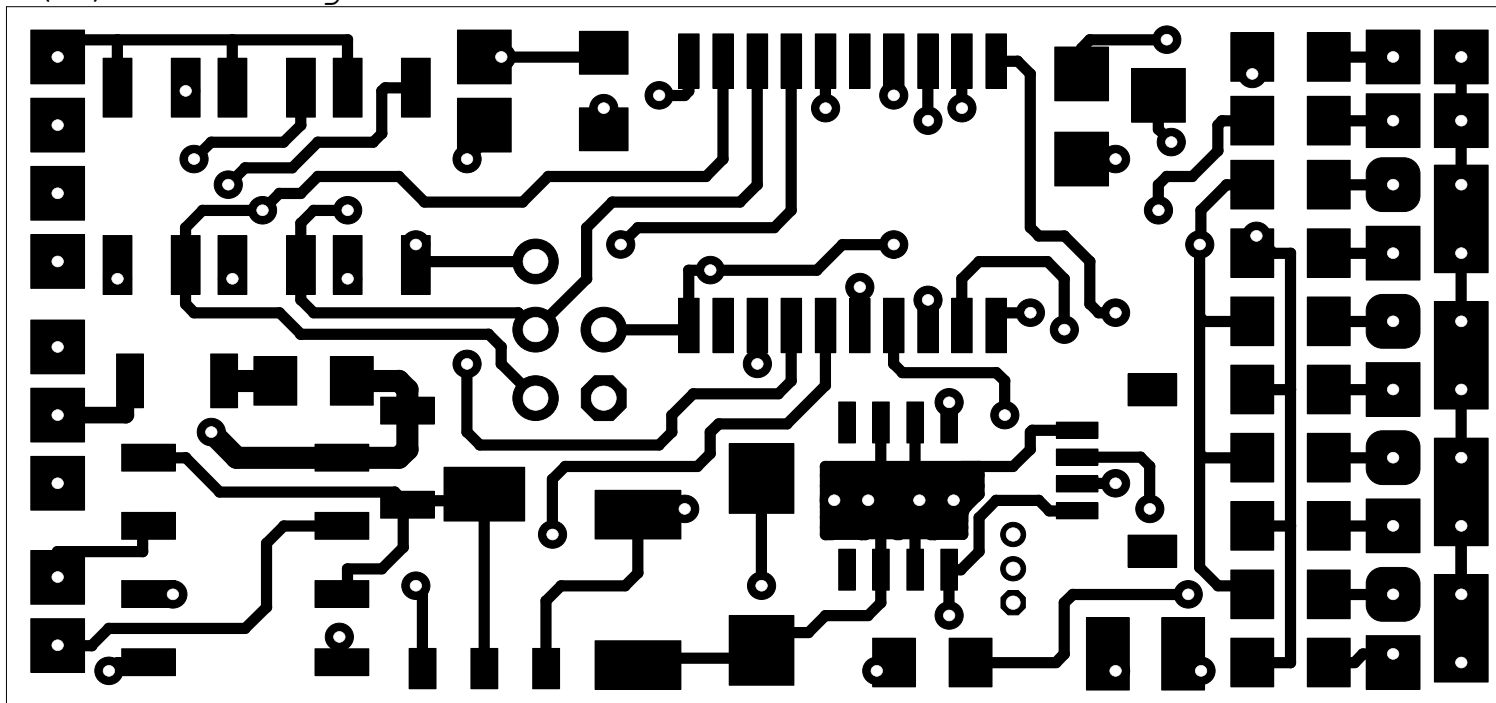
S-SENSOR



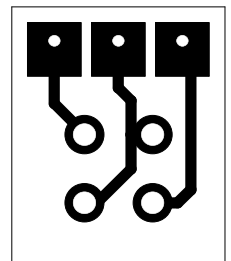
20 mm x 20 mm

(c) www.digital-park.de - Sven Brandt

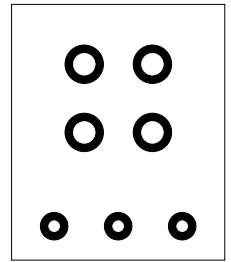
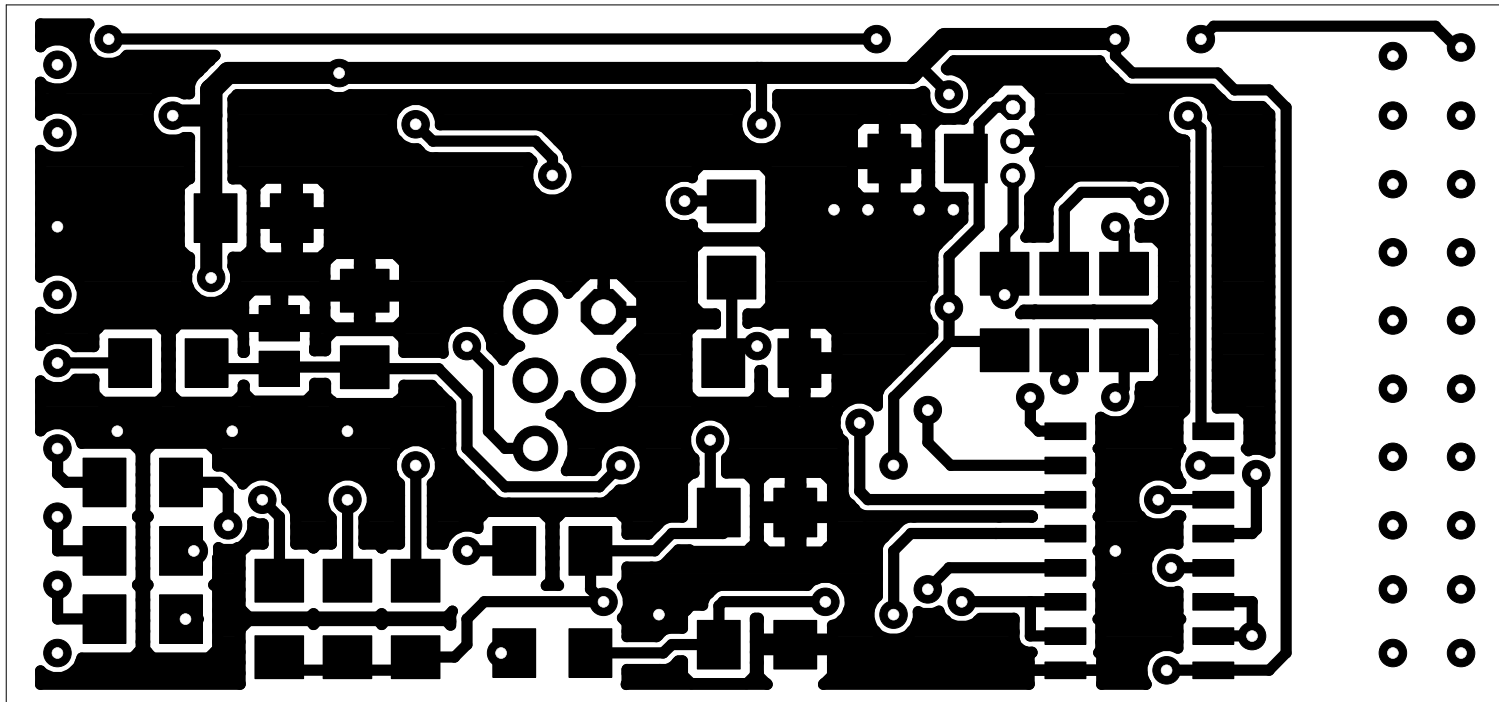
(c) www.digital-bahn.de - Sven Brandt



56 mm x 26 mm



20 mm x 50 mm



(c) mm·q̄t̄q̄t̄f̄āj̄-p̄ār̄n̄·q̄e - 2v̄ēn B̄r̄ān̄q̄f